
Raymond James Branch Finish Guidelines

Scheme 1

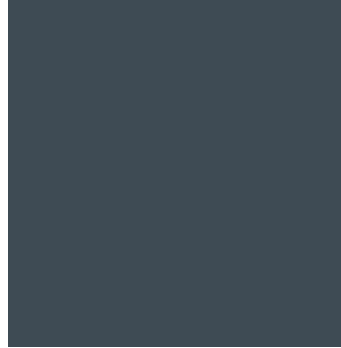
Main Paint:
SW 7045 – Intellectual Grey



Accent Paint 1:
SW - Anonymous
Common Core, Break & Copy Room,
Lobby Closet Interior & Cage Interior



Accent Paint 2: SW7615 See
Serpent– Signage Wall,
Conference Room Television
Wall



Furniture Finish:
OFS Sable Walnut
All Wood Surfaces Stained to Match



Wilsonart – Cocobala 7924-k-07
Break & Copy Room Cabinetry



Wilsonart Laminate: Luna
Frost – Cage, Break &
Copy Countertops



Carpet: SHAW
Entwine Tile, Color: Quince



Johnsonite Rubber Base Molding: Style:
Outline, Color: Pearl, 4” Height



Cambria Quartz:
Pras Sands– Transaction Tops



Armstrong Commercial Engineered Hardwood:
Color: Night Time ESP5206



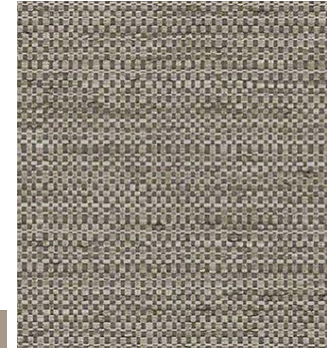
VCT Flooring: Armstrong
RAFFIA 55804/Smoke



Global Filing: Color: Oyster
F35



Stellar - Chinchilla



Brisa: Arctic – Lobby &
Conference Seating Fabric



Scheme 2

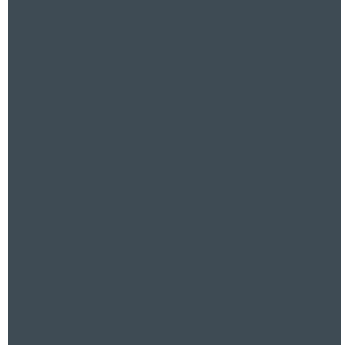
Main Paint:
SW 7030 Anew Gray



Accent Paint 1:
SW7032 Warm Stone – Accent Paint,
Common Area



Accent Paint 2: SW7615 See
Serpent– Signage Wall,
Conference Room Television
Wall



Furniture Finish:
OFS Vintage Mahogany On Walnut
All Wood Surfaces Stained to Match



Wilsonart – Empire Mahogany
7122
Break & Copy Room Cabinetry



Wilsonart Laminate:Luna
Frost– Cage, Break &
Copy Countertops



Carpet: SHAW
Entwine Tile, Teak



Johnsonite Rubber Base Molding: Style:
Outline, Color: Pearl, 4” Height



Cambria Quartz:
Bellingham – Transaction Tops



Armstrong Commercial Engineered Hardwood:
Color: Walnut Fiery Bronze ESP5253LG



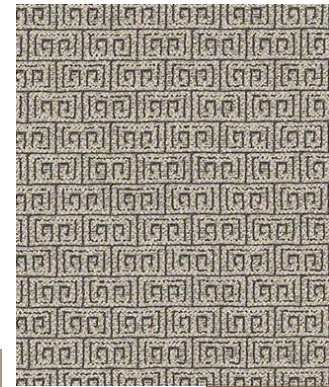
VCT Flooring: Armstrong
RAFFIA 55804/Smoke



Global Filing: Color: Oyster
F35



Tessellate - Shale



Brisa: Bark – Lobby & Conference
Seating Fabric



Scheme 3

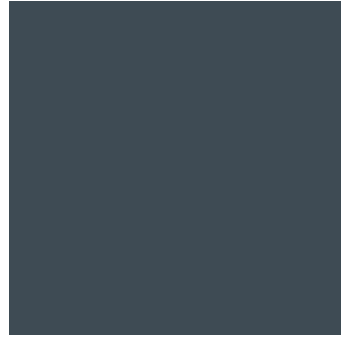
Main Paint:
SW 6148 Wool Skein



Accent Paint 1:
SW 6150– Accent Paint, Universal Khaki



Accent Paint 2: SW7615 See
Serpent– Signage Wall,
Conference Room Television
Wall`



Furniture Finish:
OFS Clear Oak
All Wood Surfaces Stained to Match



Wilsonart – Blonde Echo 7939
Break & Copy Room Cabinetry



Wilsonart Laminate:Luna
Frost– Cage, Break &
Copy Countertops



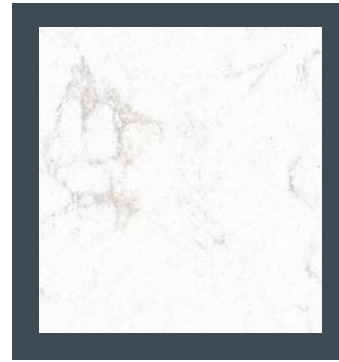
Carpet: SHAW
Sculpt: Color Suede



Johnsonite Rubber Base Molding: Style:
Outline, Color: Pearl, 4” Height



Cambria Quartz:
Torquay – Transaction Tops



Armstrong Commercial Engineered Hardwood:
Color: Maple Natural ESP5240



VCT Flooring: Armstrong Durango, Cream



Global Filing: Color: Oyster
F35



Pocket 466243-006 Dim

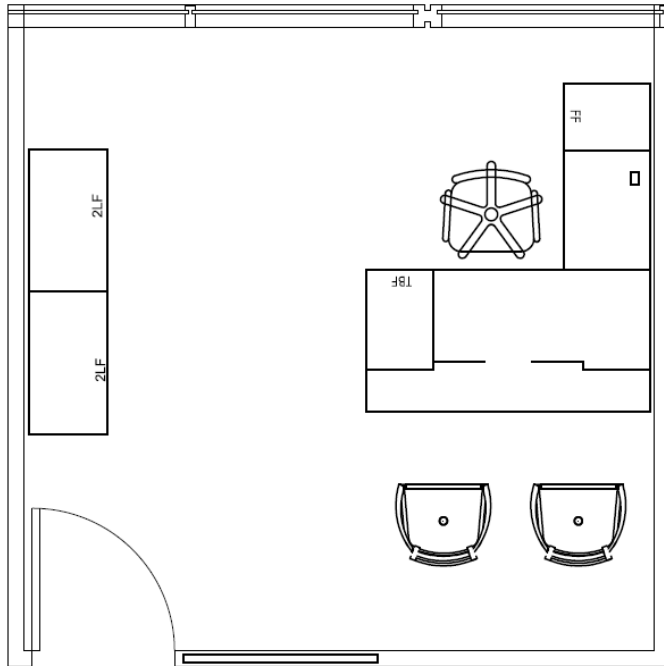


Brisa: Arctic – Lobby &
Conference Seating Fabric

Typical Office Layout Example

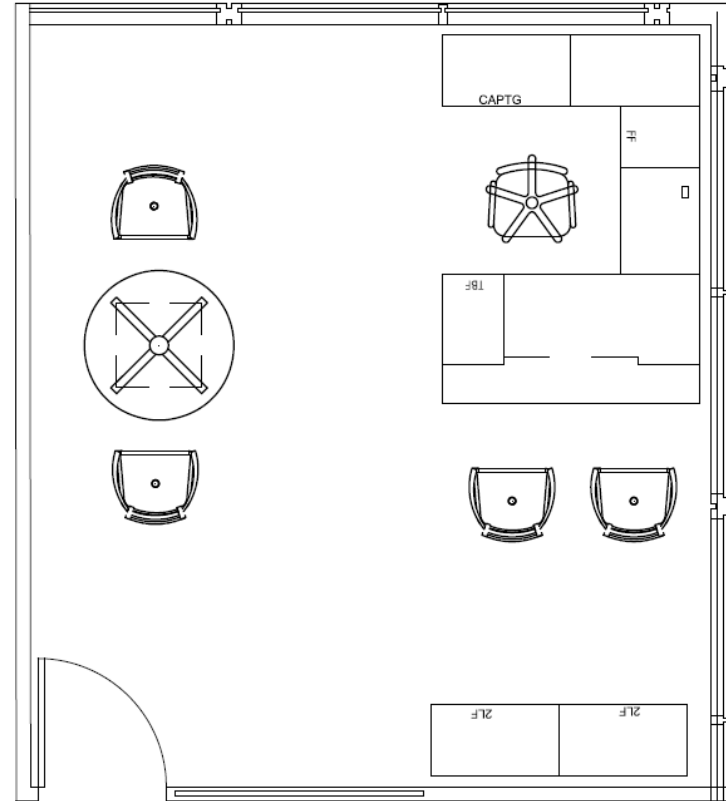
* Not To Scale

TYPICAL OFFICE SIZE 13X13



Typical Office Layout: 1 L-Shaped Desk, Two Guest Chairs & 1 Lateral File Credenza

LARGE OFFICE 18X15

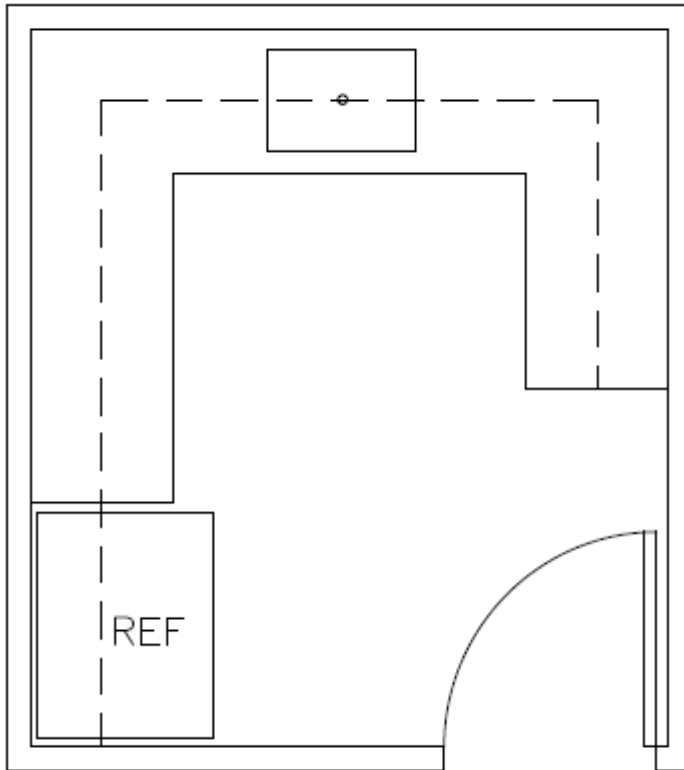


Typical Large Office Layout: 1 U-Shaped Desk, Two Guest Chairs For Desk, 2 Guest Chairs For Round Table & 1 Lateral File Credenza

Typical Break & Copy Rooms

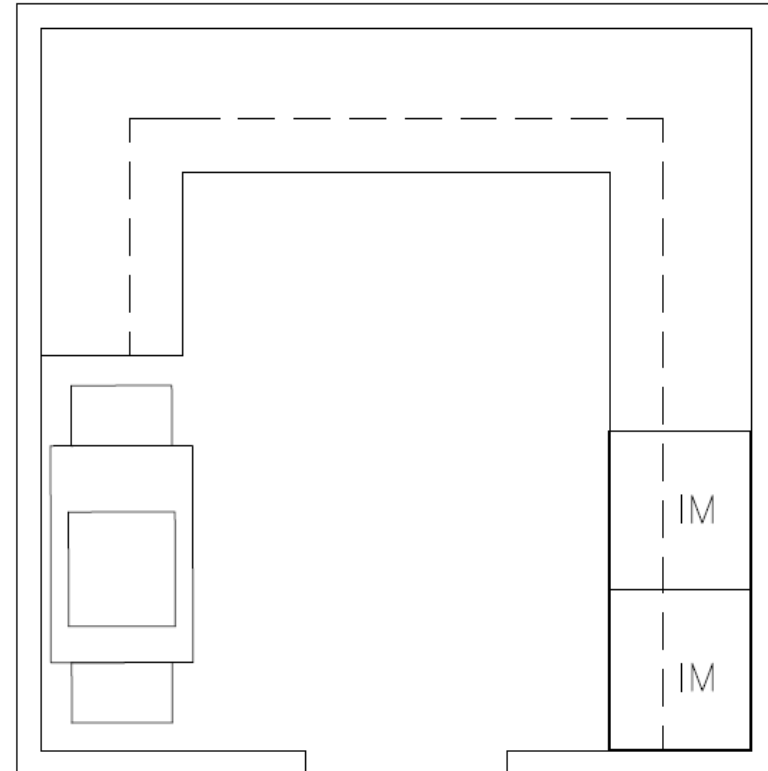
* Not To Scale

STANDARD BREAKROOM 10X9



Breakroom sizes and layouts are based on individual branch size, need and space allotted. Refrigerator, sink, microwave and dishwasher are standard appliances. Laminate base and 15" upper cabinets.

STANDARD COPYROOM 10X10



Typical Copy room sizes and layouts are based on individual branch size, need and space allotted. Copier, Iron Mounitan Boxes, voice data connections, laminate base and 15" deep upper cabinetry.

Furniture Style Selection - Cambria

Standard FA Office: L-Shaped Desk & 4 Drawer Credenza

Financial Advisor Desk Style



Finish Options:



Vintage Mahogany/
Walnut



Sable Walnut

Pull Options



Colonnade



Asbury

Edge Options



Cambria

Sales Assistant Desk & Transaction Top



Examples of Cambria Installed In Sable Walnut



Furniture Style – Impulse

Standard FA Office: L- Shaped Desk & 4 Drawer Lateral Credenza

Financial Advisor Desk



Finish Options:



Sable Walnut



Blonde Maple



Light Cherry



Clear Oak



Steel Grey Oak

Edge Options:



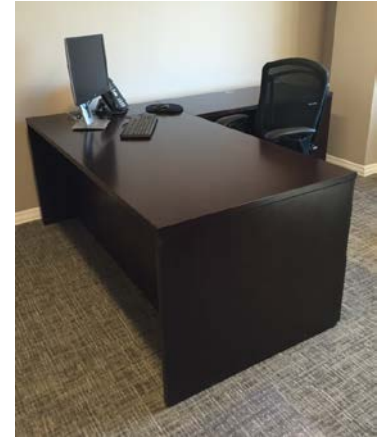
Flair



Bead



Square



Financial Advisor Sit Stand Desk – Main Desk or Return



Pull Options



Axis



Dax



Era



Grip



Office Services

RAYMOND JAMES

Furniture Options – Task & Guest Seating

Task Seating



Contessa



Via Carmel



Triumph

Guest Seating



Carino



Fiori



Elide

Additional Fabric Options

Brisa Leather-Like Fabric Options



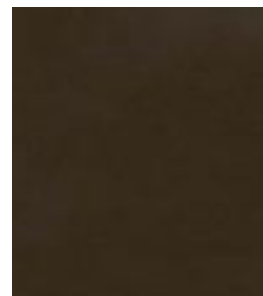
Arctic 291-5684



Wet Sand 291-3461



Stone 291-3602



Cave 291-3523



Fudge 291-3666

Fabric Options



Designtex Porte
3487-101



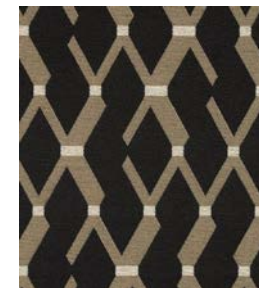
Brayer Flower AC 62141
Smoke #2



Coastline
AC-61650



Arc-Com – Network
AC-60066 Marble #7



Pocket 466243-006 Dim



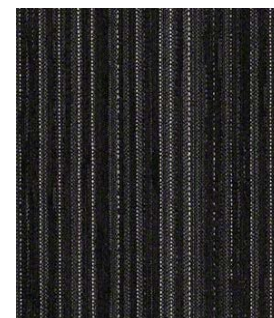
Stinston Satellite
62826 Domino



Designtex Starburst
3748-801 Dark Charcoal



Stinston Continuum
62806 Cashmere



Stinston Continuum
62814 Abyss



Designtex Tramway
3472-801

Furniture Options – Conference Room Seating

All Conference Table Seating Will Be Ordered In Fabric Indicated Within Scheme Or Black As An Alternate

Conference Table Seating



Number Nine



Global Luray



Softcurve

Optional Bench Seating (For Perimeter Of Room To Accommodate Additional People If Space Permits)



Fiat Benching System



Fiat Cube System

Lounge Seating – Optional Fabric

Realm



G3



Davenport



Lounge Seating – Optional Fabric

Trinity Quad Q1 865-P



Trinity Classic Lounge 793-C



Reception Coffee & End Tables



Trinity Round Coffee Table



Trinity Round End Table



Trinity Rectangular Coffee Table



Trinity Square End Table



Cabot Wren Excent Coffee Table



Cabot Wren Excent End Table



First Office - Scale
Oval Coffee Table



First Office - Scale
Oval Coffee Table

Alternate Finish Selection Options

Tile Alternates For Wood Flooring



Daltile Brickwork – Corridor BW06



Daltile Brickwork – Alcove BW04



Daltile –Affinity Brown AF04



Daltile –Affinity Grey A-F03